

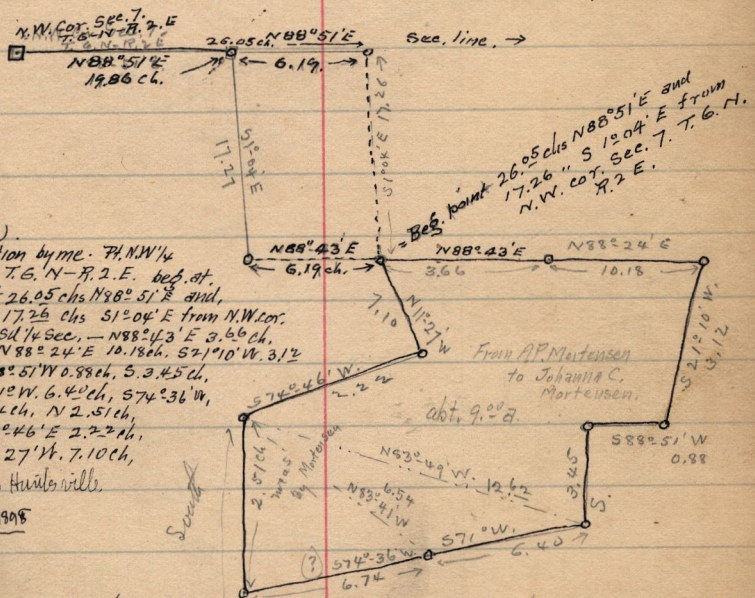
WASHINGTON JENKINS CIV. ENG.

To Thomson mortgage by James Mortensen.
 Brg. U.E. Co., Lot 54-B, North Ogden Ferry.
 S. 5.50 ch - W 20. ch, N. 5.50 ch, E. 20. ch, to bry

Plat Book,
 page 43

S-517. F. A. Hammond and T. C. Geertsento A. P. Mortensen.

Pt. Sec. 7. T. 6. N - R. 2. E --- (2) Brg. 19.8 chs N88°51'E and 7.00
 chs; S 1°04'E from N.W. cor. ~~Sec. 7.~~ - N88°34'E 10.09 ch,
 S 2°10'E 10.30 ch, - N88°24'E 10.18 ch, - S 21°10'W 3.12 ch, -
 S88°51'W 0.88 ch, - S. 3.45 ch, - S 63°W 5.62 ch, - S 9°28'E
 5.58 ch, - S 47°45'E 5.56 ch, S 4.89 ch - S88°51'W 12.56
 N. 15.16 ch - N 74°46'E 2.22 ch - N 112°27'W 7.10 ch,
 S88°43'W 6.19 ch, - N 112°04'W 10.27 ch, to bry, 34.58 a,



(Copy.)
 Reservation by M.C. F. N.W. 1/4
 Sec. 7. T. 6. N - R. 2. E. bry. at
 point 26.05 chs N88°51'E and,
 17.26 chs S 1°04'E from N.W. cor.
 S 1/4 Sec. - N88°43'E 3.66 ch,
 N88°24'E 10.18 ch, S 21°10'W 3.12
 S88°51'W 0.88 ch, S 3.45 ch,
 S 71°W 6.40 ch, S 74°36'W,
 6.74 ch, N 2.51 ch,
 N 74°46'E 2.22 ch,
 N 112°27'W 7.10 ch,
 ended to Huntsville.

Nov. 10-1908

	chs	N-	S-	E-	W-
N	2.51	2.51			
N 74°46'E	2.22	.59		2.14	
N 112°27'W	7.10	6.76			1.42
N 88°43'E	3.66	.08		3.66	
N 88°24'E	10.18	.11		10.18	
S 21°10'W	3.12		2.91		1.13
S 88°51'W	0.88		.02		0.88
S -	3.45		3.45		
S 71°W	6.40		2.08		6.05
S 74°36'W	6.74		1.79		6.50
		10.25	10.25	15.98	15.98